

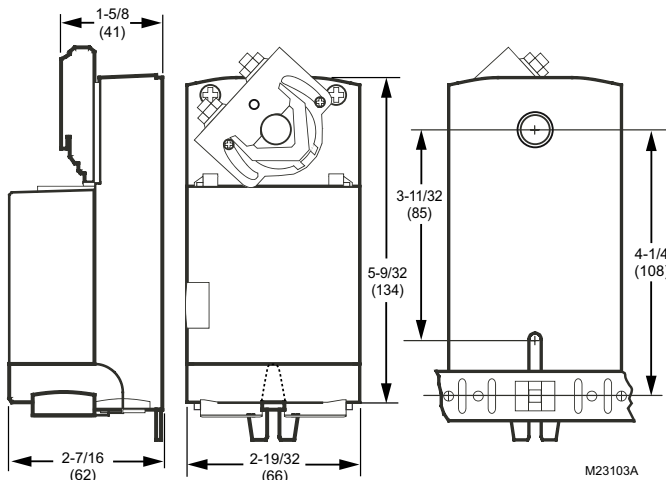
Direct Coupled Actuators - Non-Spring Return

N05 Series: MN6105; MN7505

Non-Spring Return Direct Coupled Actuator, 44 lb-in.



Dimensions in inches (millimeters)



MN6105, MN7505 44 lb-in. (5 Nm), non-spring return, direct coupled, low voltage actuators that accept adjustable modulating (0/2-10 Vdc) or on/off (SPDT) control are used within heating, ventilating, and air-conditioning (HVAC) systems. They can drive a variety of quarter-turn, final control elements for: air dampers, air handling units, ventilation flaps, louvers, and ball valves. The W model includes a 3-foot whip.

- Declutch for manual adjustment
- Adjustable mechanical end limits
- Removable access cover for direct wiring
- Mountable in any orientation
- Function selection switch for selecting modulating or floating/2-position control
- Models available with three-foot, 18 AWG color-coded cable

Application: HVAC

Actuator Type: Damper; Valve

Frequency: 50 Hz; 60 Hz

Fail Safe Mode: Non-Spring Return

Torque Rating (lb-in.): 44 lb-in.

Torque Rating (Nm): 5 Nm

Additional Torque Ratings (lb-in.): Maximum Stall – 70 lb-in.

Additional Torque Ratings (Nm): Maximum Stall – 8 Nm

Rotation to Open: By switch

Rotational Stroke Adjustment: Dual Integral Adj. Stops (3 degree increments)

Stroke: 95 ±3 degrees

Mounting: Direct Coupled

Environmental, Electrical, or Ingress Protection Rating: NEMA 2; IP54

Materials: Plenum rated plastic housing

Maximum Noise Rating: Driving (dB(A) @ 1m) – 35

Shaft Adapter Type: U-bolt clamp

Manual operation: Declutch mechanism (3 degree increments)

Shaft Dimensions: 1/4 to 1/2 in. square or 3/8 to 5/8 in. round (6 to 13 mm square or 8 to 16 mm round)

Weight: 1 lb (0.45 kg)

Approximate Dimensions: 5.23 in. high x 2.60 in. wide x 2.44 in. deep (134 mm high x 66 mm wide x 62 mm deep.)

Ambient Temperature Range: -5°F to +140°F (-20°C to +60°C)

Shipping and Storage Temperature Range: -22°F to +176°F (-30°C to +80°C)

Approvals, Canadian Underwriters Laboratories Inc.: cUL C22.2 No. 24-93

Approvals, C-Tick: N314

Approvals, Underwriters Laboratories Inc.: UL873, Plenum Rated

Approvals, CE: 89/336/ECC, 73/23/EEC

Operating Humidity Range (% RH): 5 to 95% RH, non-condensing

Includes: Mounting bracket, screws, shaft adapter, water-tight strain-relief cable fittings

Comments: Integral 1/2 in. NPSM conduit connection.

Tradeline Value: Tradeline

Supply Voltage: 24 Vac +20%, -15%; 24 Vdc

Material Number	Control Signal	Feedback	Timing, Nominal	Switch Ratings	Power Consumption	Cable	Electrical Connections	Electrical Connections Size	Internal Auxiliary Switch
MN6105A1011/U	Floating; SPDT; On/Off		Driving @ 60 Hz – 95 sec		Driving – 5 VA		Enclosed screw terminal strip (22 to 14 AWG)		0
MN6105A1201/U	Floating; SPDT; On/Off		Driving @ 60 Hz – 95 sec	30 Vdc max., 3 A Class II	Driving – 5 VA		Enclosed screw terminal strip (22 to 14 AWG)		2
MN6105W1011/U	Floating; SPDT; On/Off		Driving @ 60 Hz – 95 sec		Driving – 5 VA	Threaded conduit connector	18 AWG color-coded cable	36 in. (0.9 m)	0
MN7505A2001/U	Floating; SPDT; On/Off; (0) 2-10 Vdc (max. output: ±1.0 mA w/500 ohm resistor)	(0) 2-10 Vdc (max. output: ±1.0 mA)	Driving @ 60 Hz – 95 sec		Driving – 5 VA		Enclosed screw terminal strip (22 to 14 AWG)		0
MN7505A2209/U	Floating; SPDT; On/Off; (0) 2-10 Vdc (max. output: ±1.0 mA w/500 ohm resistor)	(0) 2-10 Vdc (max. output: ±1.0 mA)	Driving @ 60 Hz – 95 sec	30 Vdc max., 3 A Class II	Driving – 5 VA		Enclosed screw terminal strip (22 to 14 AWG)		2
MN7505W2001/U	Floating; SPDT; On/Off; (0) 2-10 Vdc (max. output: ±1.0 mA w/500 ohm resistor)	(0) 2-10 Vdc (max. output: ±1.0 mA)	Driving @ 60 Hz – 95 sec		Driving – 5 VA	Threaded conduit connector	18 AWG color-coded cable	36 in. (0.9 m)	0